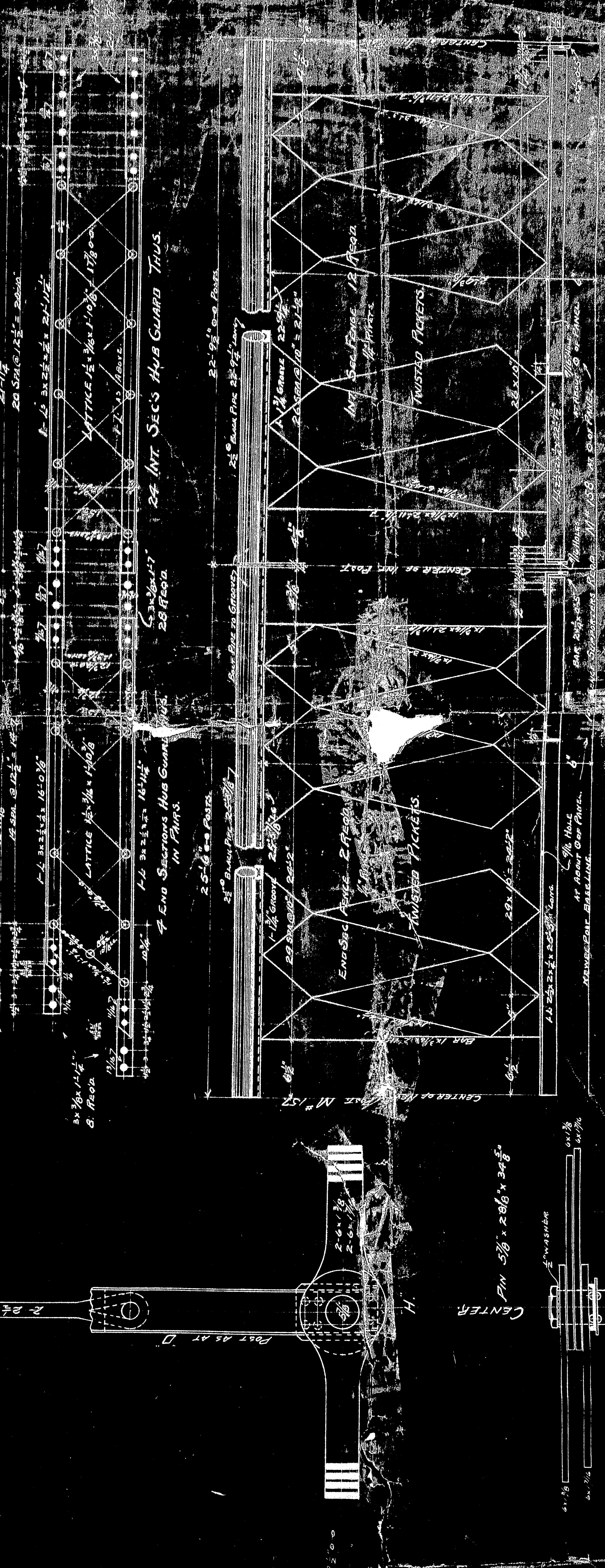
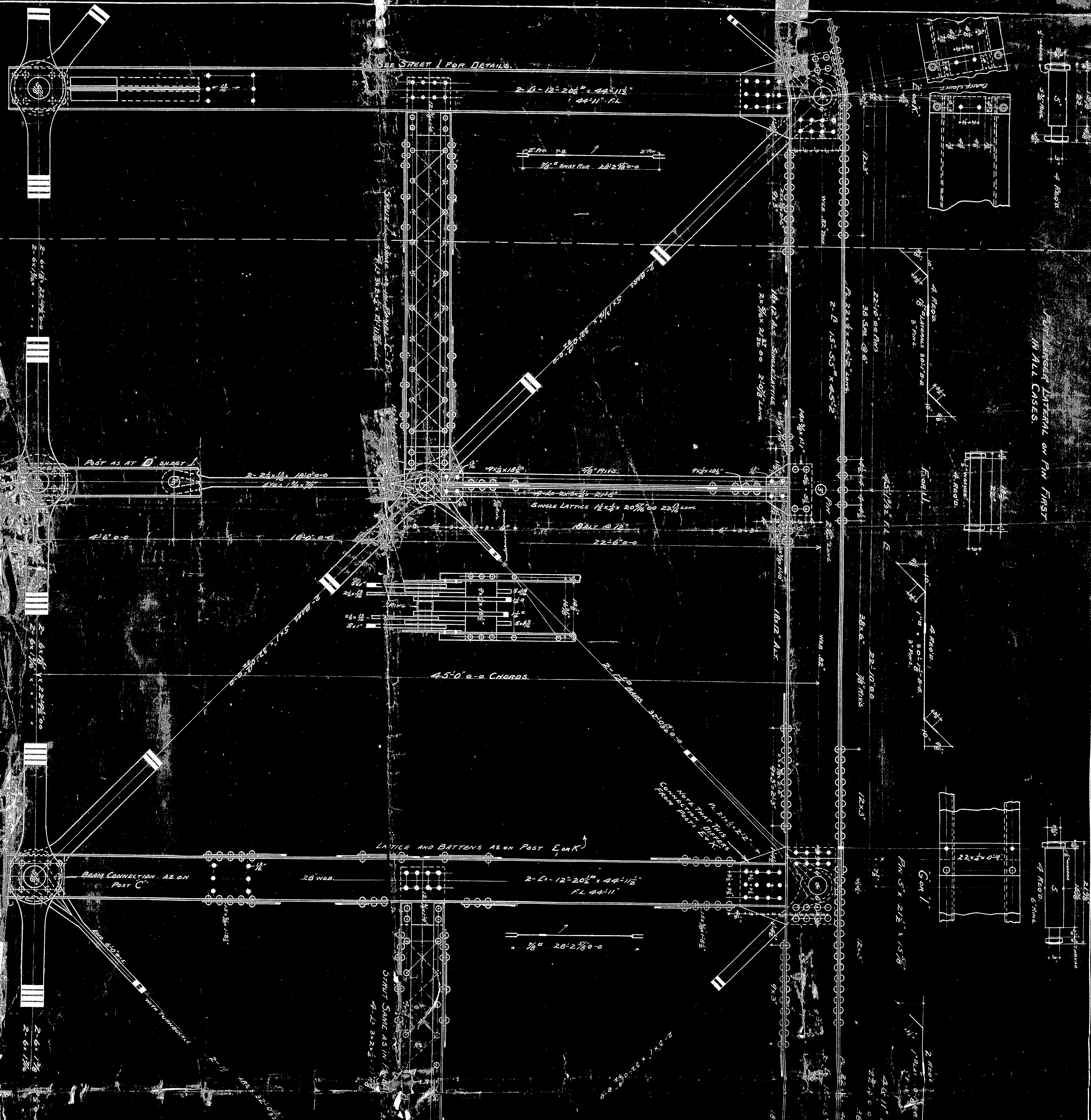


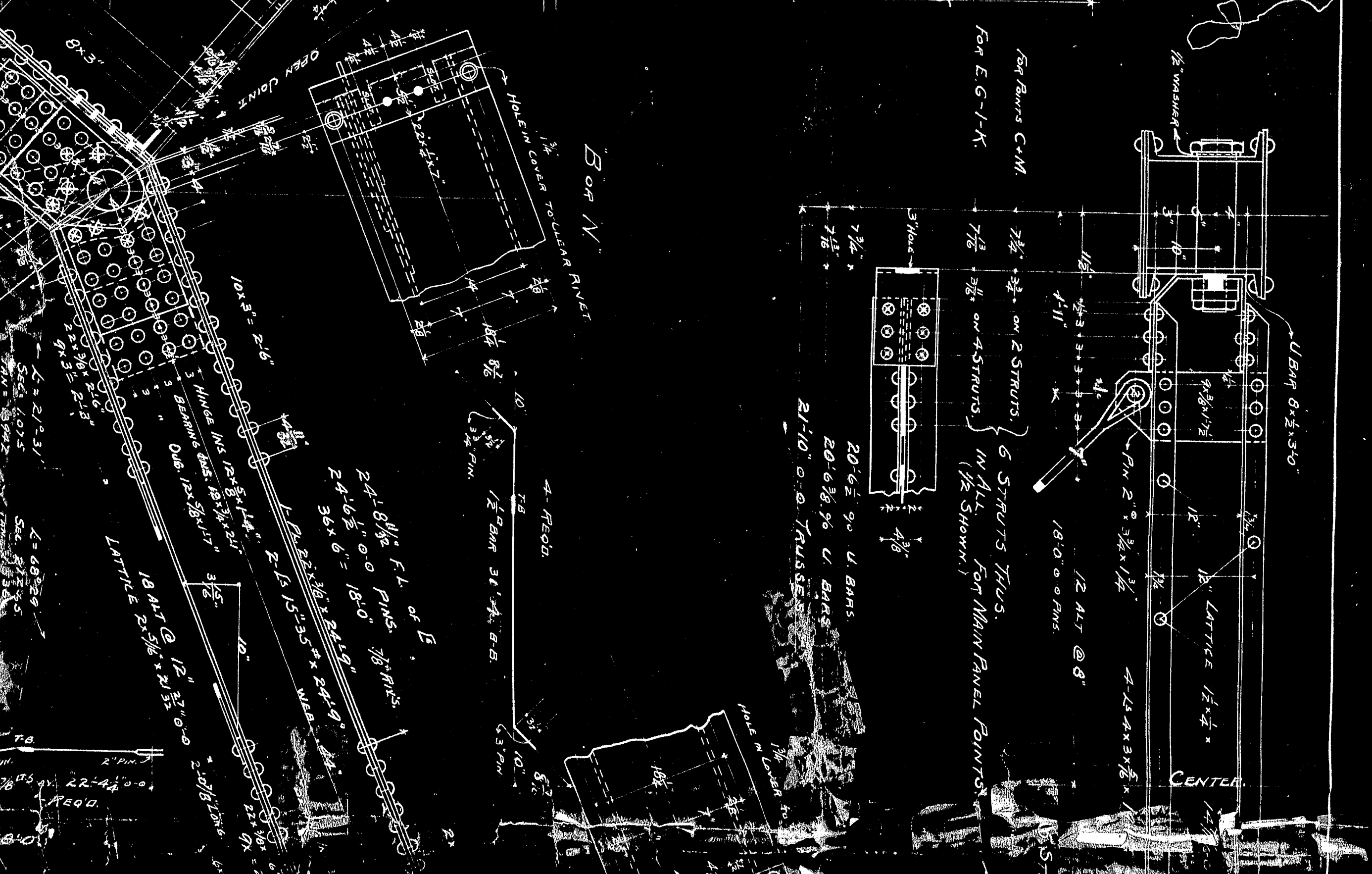
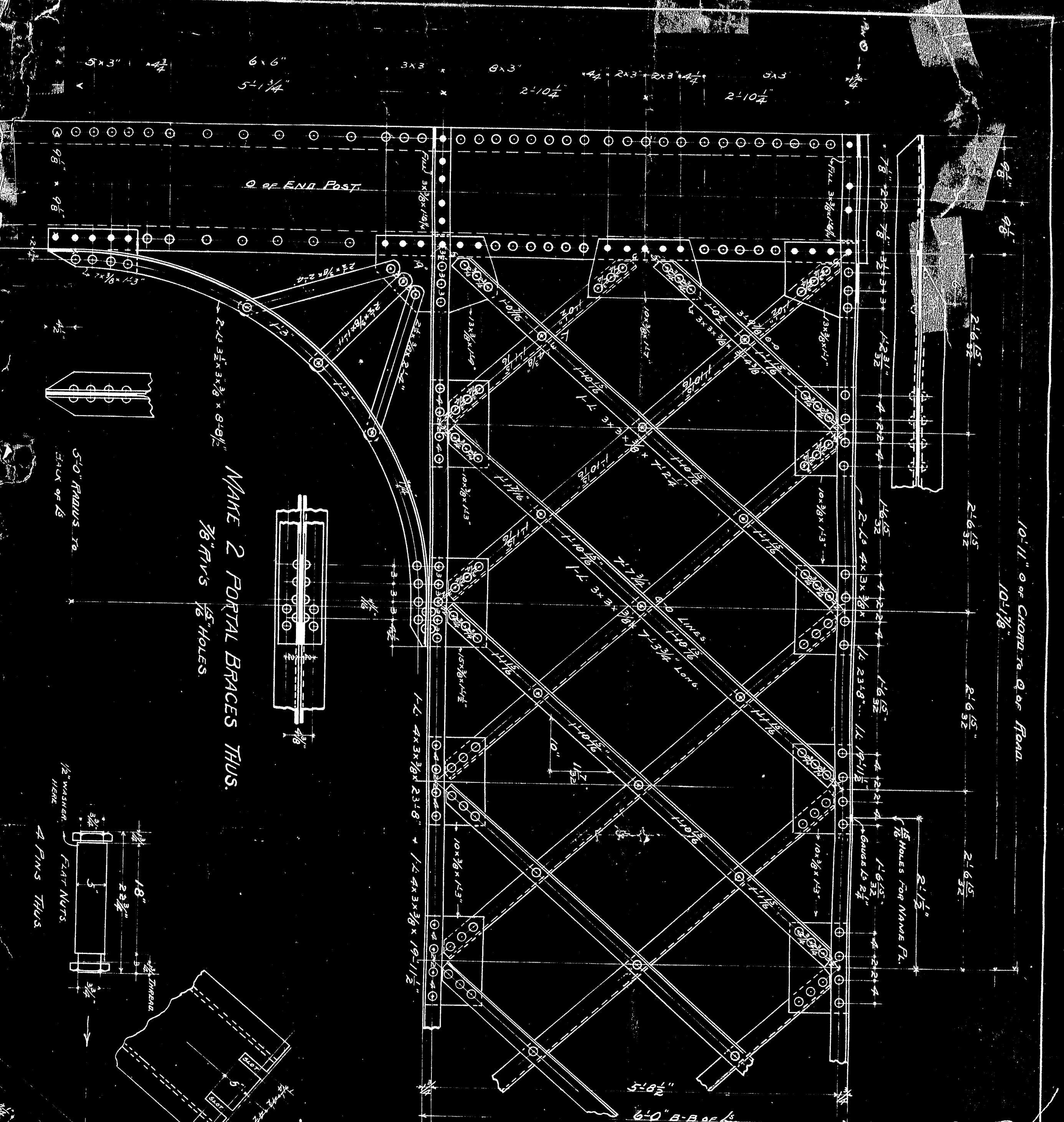
BILL OF VOISTS
 TO BE SHIPPED DIRECT FROM MILLS TO SITE.
 ROADWAY--
 84 I BEAMS 9'-2 1/2" x 22'-9" long
 24 CHANNELS 9'-1 1/2" x 22'-9"
 SIDEWALK--
 12 I BEAMS 8'-18" x 22'-9" long
 24 CHANNELS 8'-1 1/2" x 22'-9"
 4

13 BEAMS REQD.
 RANCH BEAMS TO FIT
 1/2" THUS FOR BEAMS E-F-G-H-I-J-K RANCH BEAMS TO FIT
 1/2" THUS FOR BEAMS E-F-G-H-I-J-K RANCH BEAMS TO FIT



CONTRACT NO. 20
 ONE SPAN HIGHWAY BRIDGE 319' LONG
 OVER THE ANDROSCHON RIVER
 AT VERMONT FALLS, N.Y.
 UNDER THE MASSILLON BRIDGE
 WAS SHIPPED DIRECT



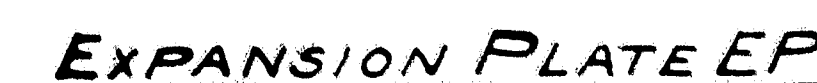
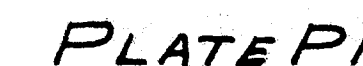


ONE SPAN REED THUS
ALL ANGLES, CHANNELS AND PLATES MADE OF SOFT STEEL.
EYE BARS, PINS AND ROLLERS MEDIUM STEEL.
LATERAL RODS AND COUNTERS IRON.

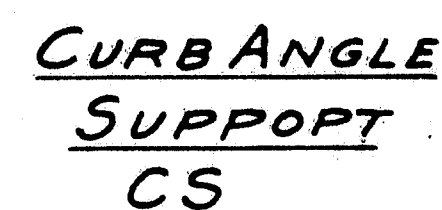
MAKE 2 PORTAL BRACES THUS
3/8\"/>

- 2 5\"/>




$$\frac{\text{CURB ANGLE CAI}^R \text{ (AS SHOWN)}}{\text{CURB ANGLE CAI}^L \text{ (OPP. HAND)}}$$


Notes
Structural Steel, Maine State Highway
Commission, Bridge Division, Specifications
for Steel Highway Bridges (November 1945)
Rivets and Holes as noted.
No shop paint required.



FLOOR SUPPORT S1
FLOOR SUPPORT S2

FLOORING

5' Open Steel Grid Flooring (6,475 sq. ft. required) shall conform to the Standard Specifications for Highway Bridges (1944) adopted by the American Association of Highway Officials.

Flooring shall be painted one Shop Coat of red lead and oil.

Drawings showing complete shop and assembly details shall be submitted by the Manufacturer for approval before the beginning of fabrication.

Design Loading H-13

BOLT SCHEDULE
To be furnished with
Structural Steel
75-Machine Bolts $\frac{3}{4}$ " x $1\frac{1}{2}$ "
35- do do $\frac{3}{4}$ " x $2\frac{1}{2}$ "
20 do do $\frac{3}{4}$ " x $1\frac{1}{2}$ "
Hex head * hex nut.

DESIGN WHITE
CHECK G.W.S. BRIDGE 2018

STATE HIGHWAY COMMISSION
BRIDGE DIVISION

ANDROSCOGGIN RIVER BRIDGE
OVER THE
ANDROSCOGGIN RIVER
BETWEEN THE TOWNS OF
LIVERMORE FALLS & LIVERMORE
ANDROSCOGGIN COUNTY
FLOORING & STRUCTURAL STEEL

SHEET ONE AUGUSTA, MAINE NOV. 1947

